

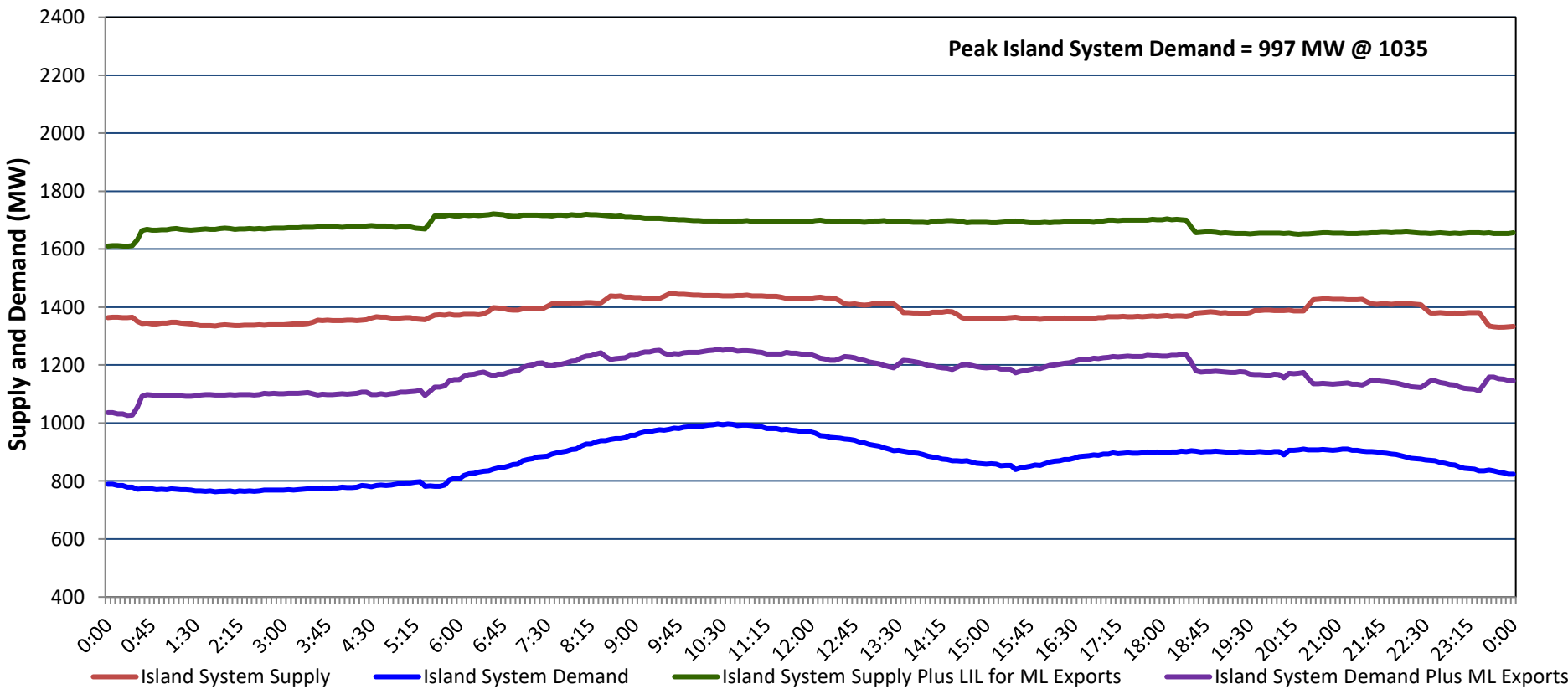
Newfoundland Labrador Hydro (NLH)

Supply and Demand Status Report Filed Monday, May 26, 2025

Section 1

Island Interconnected System - Supply, Demand & Exports

Actual 24 Hour System Performance For Saturday, May 24, 2025



Island Supply Notes For May 24, 2025

- A
- As of 0816 hours, March 26, 2025, St. Anthony Diesel Plant available at 8.85 MW due to forced derating (9.7 MW).
- B
- As of 0800 hours, March 30, 2025, Holyrood Unit 3 unavailable due to planned outage 130 MW (150 MW).
- C
- As of 0823 hours, March 31, 2025, Bay d'Espoir Unit 1 unavailable due to planned outage (76.5 MW).
- D
- As of 0823 hours, March 31, 2025, Bay d'Espoir Unit 2 unavailable due to planned outage (76.5 MW).
- E
- As of 1543 hours, May 03, 2025, Holyrood Unit 2 available but not operating 115 MW (170 MW).
- F
- As of 0800 hours, May 04, 2025, Holyrood Unit 1 unavailable due to planned outage (170 MW).
- G
- As of 0851 hours, May 05, 2025, Hardwoods Gas Turbine unavailable due to planned outage (50 MW).
- H
- As of 1538 hours, May 16, 2025, Holyrood Diesels available at 8 MW due to forced derating (10 MW).

Section 2

Island Interconnected System - Supply, Demand & Outlook

| Sun, May 25, 2025  | Island System Outlook <sup>2</sup>             | Seven-Day Forecast                 | Island System Daily Peak Demand (MW) |                        |
|--|--|------------------------------------|--------------------------------------|------------------------|
|  |  |                                    | Forecast <sup>8</sup>                | Adjusted <sup>6</sup>  |
| Island System Supply: <sup>4</sup><br>NLH Island Generation: <sup>3,7</sup><br>NLH Island Power Purchases: <sup>5</sup><br>NP and CBPP Owned Generation:<br>LIL/ML Net Imports to Island: <sup>9</sup> | 1,376 MW<br>995 MW<br>90 MW<br>205 MW<br>86 MW | Sunday, May 25, 2025               | 1,000                                | 950                    |
|  |  | Monday, May 26, 2025               | 1,035                                | 985                    |
|  |  | Tuesday, May 27, 2025              | 1,030                                | 980                    |
|  |  | Wednesday, May 28, 2025            | 890                                  | 840                    |
|  |  | Thursday, May 29, 2025             | 860                                  | 810                    |
|  |  | Friday, May 30, 2025               | 840                                  | 790                    |
|  |  | 7-Day Island Peak Demand Forecast: | 1,035 MW                             | Saturday, May 31, 2025 |

Island Supply Notes For May 25, 2025

- Notes:
1. Generation outages for running and corrective maintenance are included. These are not unusual for power system operations. They generally do not impact customer supply. Hydro schedules outages to system equipment whenever possible to coincide with periods when customer demands are low and sufficient supply reserves are available. However, from time to time equipment outages are necessary and reserves may be impacted.
2. As of 0800 Hours.
3. Gross continuous unit output.
4. Gross output from all Island sources (including Note 3).
5. NLH Island Power Purchases include: ML Imports, Exploits Generation, Rattle Brook, Star Lake, Wind Generation and capacity assistance (when applicable).
6. Adjusted for interruptible load and the impact of voltage reduction when applicable.
7. Due to limitations inherent in the design of combustion turbines, the output of combustion turbines may be reduced in the event that ambient temperatures exceed the threshold required for full rated output. This threshold is dependent on the design of each turbine.
8. Does not include ML Exports.
9. LIL Import sunk in the Island System. Actual LIL flows will be restricted by various system conditions including, but not limited to, Island Load, ML Exports and Avalon Unit status.

Section 3

Island Peak Demand and Exports Information

Previous Day Actual Peak and Current Day Forecast Peak

|                   |                                  |       |           |
|-------------------|----------------------------------|-------|-----------|
| Sat, May 24, 2025 | Island Peak Demand <sup>10</sup> | 10:35 | 997 MW    |
|                   | Exports at Peak                  |       | 257 MW    |
|                   | LIL Net Imports to Island        |       | 2,271 MWh |
| Sun, May 25, 2025 | Forecast Island Peak Demand      |       | 1,000 MW  |

- Notes:
10. Island Demand is supplied by NLH generation and purchases, LIL Imports plus generation owned and operated by Newfoundland Power and Corner Brook Pulp & Paper (Deer Lake Power, DLP).